



Parish & Community News

Autumn 2024



29 September 10.30am

All Saints Church

6 October 9 am

St Andrew's Church

Please bring, if you can, donations of long-life/ tinned food to collect for local charities.



**ALL SAINTS BARN DANCE**

MORE INFORMATION TO FOLLOW - LOOK OUT FOR POSTERS. BOOKING LINK TO FOLLOW ON WEBSITE

**SAVE THE DATE**  
28 SEPTEMBER 2024




If you would like to attend or help decorate the church, please contact the office [office@eastwinchester.org](mailto:office@eastwinchester.org) phone: 01962 435003

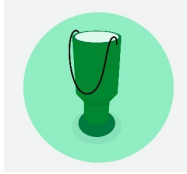


### Get together with Macmillan Coffee Morning

On Friday 27th September at All Saints Church 10 am – 1pm

Available to help with the event?

contact [sarah.read@eastwinchester.org](mailto:sarah.read@eastwinchester.org)



[www.winchestergreenweek.org.uk](http://www.winchestergreenweek.org.uk)

**21st— 29th September 2024**

## WELCOME TO ALL SAINTS

ALL SAINTS  
SERVICE TIMES  
*Holy Communion*  
9am on Sunday

(1<sup>st</sup> Sunday Chilcomb)

10:30am on Wednesday

*All Saints Live*

10:30am on Sunday

Livestreamed on YouTube for AllSaintsEWB or use this link:

[YouTube.com/AllSaintsEWB](https://www.youtube.com/AllSaintsEWB)

### Dear Friends and Neighbours,

Writing this has felt very strange. Growing up in the Benefice, I have fond memories of delivering these magazines (a huge thank you to the wonderful volunteers who have brought this magazine to your door), and of reading them, so this feels like things coming full circle. I hope you find my contributions as helpful as my predecessors were for me. If we haven't met yet, I'm Chris Curry, the new Rector of the East Winchester Benefice, and I'm overjoyed to be here serving communities that are important to me as someone who grew up in the area.

Coming full circle feels like an appropriate thing to write about in the Autumn, which for me is always a season of transition. Transition in our natural environment as the leaves change, and plants and animals prepare for winter. Transition often for us. You may, like me, be entering a new role, a new season of life, or a new school year. Moments of transition and change are always filled with a dual sense of hope and fear, what's new can be exciting but often brings with it more questions than answers.

For Christians as we are confronted with fear and uncertainty, we are reminded to hold on to what we know is stable. Jesus in his life and teaching, and all the transition that brought, points towards the stable truth that God who has always loved us, continues to love us, and continues to support us.

That has been my experience in this time of transition: an experience of love and welcome. Expressed through the many of you who have greeted my family and I as we've settled here, thank you for your warm welcome. It is that experience of stability I hope and pray for everyone experiencing transitions this Autumn.

Looking forward to meeting you soon,

**Chris**





# MAGICIAN

Hugh Sherwin—Local Magician

Table-Side - Parties - Events

E-mail: [hugh.sherwin@yahoo.com](mailto:hugh.sherwin@yahoo.com)

Tel: 07979756342

**ON POINT** Mobile Sharpening Service

For knives, scissors, gardening equipment and so much more.

Call **Becky** on **07393600630**  
 email [onpointsharpening@outlook.com](mailto:onpointsharpening@outlook.com)  
[www.onpoint-sharpening.co.uk](http://www.onpoint-sharpening.co.uk)

**BURROW** 

**Septic Tank Owners register your interest in a fully-funded upgrade**



Due to the Phosphate pollution in your local river catchment we are operating a septic tank replacement scheme using private funding.

We install wastewater treatment plants that remove almost all pollutants, with funding secured from planning applicants who need to create a positive impact on the environment.

**Register on our website today.**



[burrow-environmental.com](http://burrow-environmental.com) 01935 507 508



**Local carpenter specialising in creating and installing custom fitted furniture**

**Bespoke pieces to fit specific spaces**

**Flatpack assembly and fitting**

**General carpentry needs.**

For any enquires please contact Gary

tel: 07722836320

email: [garyrouse@thewinchesterwoodworker.com](mailto:garyrouse@thewinchesterwoodworker.com)

website: [thewinchesterwoodworker.com](http://thewinchesterwoodworker.com)

## BLACKWELL & MOODY LTD

Craftsmen for five generations

in

## GRANITE, MARBLE & STONE

**Magdalen Masonry Works  
Alresford Road, SO21 1HE**

**Tel: 01962 8524776**

Email: [blackwellandmoody@gmail.com](mailto:blackwellandmoody@gmail.com)

[www.backwellandmoody.co.uk](http://www.backwellandmoody.co.uk)

(Car Park available)

## Small Saints and Messy Church

Would you be able to help us at Small Saints baby and toddler group on a Tuesday morning please? I would love to hear from you if you have a couple of hours to spare each Tuesday, during term time, to help set-up, run and tidy up the Small Saints baby and toddler group. The running of the group includes making refreshments for adults, preparing snacks for children and chatting with our adults and children who attend the group.

Please email me, [beth.robertson@eastwinchester.org](mailto:beth.robertson@eastwinchester.org) if you would like to find out a bit more or if you'd really like to help. It would be wonderful to hear from you.



### Small Saints Baby and Toddler Group

Every Tuesday and Thursday

during term time, 10 - 11:30am

We have a friendly group, where all children and their grown-ups are very welcome to come and enjoy play, refreshments and chat with our group leaders and other parents and carers. We love to see our regulars, but please do pop in if you have never been before - we would love to see you.

### Messy Church

Every third Friday of the month, except January and August, 3:30 - 5pm

Messy Church is a relaxed way for all-ages to enjoy church. We explore our relationship with God through faith, fun and food! The fun comes in the form of different craft activities, some months we will have food activities for children to enjoy creating too. Refreshments are served for children and adults at every session. We end the session with a bible story.

Our next Messy Church session will be on Friday 20th September where we will welcome Reverend Chris Curry to our Messy Church sessions.



# Parish Family News

**Congratulations:** To anyone who has had a baby recently including **Emma Jarvis** & Matt Rose who had a baby boy **Alfie Oscar** on 5<sup>th</sup> July a brother for **Henry** & another grandchild for **Steve & Jenny Jarvis**



**Baptisms:** Best wishes to anyone who has been baptized recently



**Weddings:** Congratulations to **Ffion Goodenough & Samuel Wilson** who got engaged in Rome on 19<sup>th</sup> July to **Mandy Cook & Nevil Wilson** who were married at St Andrews, Chilcomb on 25<sup>th</sup> May and to any other couples who have recently got married & best wishes to those preparing to get married.



**For your prayers:** Anyone who is unwell at home or in hospital.



To those starting a new school, College or University.



For our new Rector Chris Curry & his family as they settle in..

The departed and bereaved families: Our thoughts and prayers are with any families who have recently been bereaved including those of **Bill Turnbull** and **Craig Dennis Galpin**, who grew up in Highcliffe & lived here for many years Craig's memorial service took place at All Saints Church on 24<sup>th</sup> June.

Please accept my apologies if any of the above details are incorrect.

If you have any family news that you would like included then please

Tel: 01962 866490 Email: [jenny.jarvis@eastwinchester.org](mailto:jenny.jarvis@eastwinchester.org)

## CHURCH PARISH CONTACT DETAILS

[office@eastwinchester.org](mailto:office@eastwinchester.org) phone: 01962 435003

[www.AllSaintsEWB.org](http://www.AllSaintsEWB.org) @AllSaintsEWB



If you have anything you would like us to pray for

(in confidence) please email: [prayer@eastwinchester.org](mailto:prayer@eastwinchester.org)

## WE HAVE SPACES AVAILABLE !



We are a local, friendly preschool with a warm and welcoming team of well qualified staff.

We aim to provide high quality care in a safe, secure and stimulating environment. We offer a variety of different sessions on a term time basis.

— Rated Good by OFSTED — Large outside space —

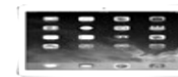
To enquire about spaces visit us at All Saints Church Hall,

Petersfield Road Winchester, Hants, SO23 0JD

Call 07871195724 Email [manager@aspswinchester.org](mailto:manager@aspswinchester.org)

[www.aspswinchester.org](http://www.aspswinchester.org)

## Computer, Mac or Tablet Problems?



- Home Visits
- PC, Laptop, Pads, iPhones
- Systems / Software / Tools
- Fix Windows 7/8/10, Mac OS
- Virus cleans, Security
- Tune Ups, Health Checks
- Broadband & Data / Printer Sharing
- Upgrades & Hardware
- Cracked Screens
- Data Recovery
- Impartial Advice

Laptops, PCs, Macs, iPads Phones

C&S Computers

Call Colin Nicholson :

01962 713890

Mob:

07727 481220

Qualified engineer

10% discount on labour with Magazine if over ½ hour





## Fully Funded Suicide Prevention programme

Project Iris which has recently launched in Winchester and Basingstoke. As part of Inclusion Education's ongoing commitment to supporting young people from 11-25 mental

health and well-being.

The project offers support for young people experiencing, loneliness, isolation, suicidal ideation and self-harm, developing strategies and scaffolding to better understand and support their mental health. The two-hour sessions will run over six weeks – during school hours and consisting of suicide prevention education and support combined with an evidenced therapeutic activity - equine therapy.

Led by qualified mental health professionals, the programme will combine activity with focused talking and education aimed to increase understanding of emotional distress, safety planning and creating support scaffolds. The course is delivered in small supported chronological age and cognitively appropriate groups offering peer support and normalisation, free from the pressures and stigma associated with suicide.

As a funded project, this invaluable service is being offered free of charge to young people that meet the criteria, with places assessed on need and suitability for the programme by our team.

Inclusion Education (a working name of Inclusion Hampshire) is an organisation that has been supporting mental health and wellbeing through education for over ten years with a wealth of experience and expertise via our service Inclusion School and Inclusion College. Our own experience has highlighted a growing trend in young people accessing our services exhibiting suicidal ideation, thoughts and self harm. Our approach and pedagogy has adapted and evolved to support this, making us the ideal organisation to offer this project in the local area.

If you have any questions or would like to make a referral, email us:

[ProjectIris@inclusioneducation.org.uk](mailto:ProjectIris@inclusioneducation.org.uk)



## VOX HUMANA & GREGORIANA



*The Play of Daniel*, the thirteenth century liturgical drama about one or two of the Prophet Daniel's doings.

The concert will take place in Romsey Abbey on St Cecilia's Day 22<sup>nd</sup> November 2024 19:30 – 21:30 and will feature the actress and director, Sarah Bullen as the narratrix, and the choirs of Vox Humana and Gregoriana.

The play was created by the choristers of Beauvais Cathedral and probably based upon an idea from the twelfth century. It is, in effect, a plainchant opera whose simple message is *put all your trust in God*. The play draws from the many stories about Daniel, selecting just two – *the writing on the wall*, and *the lions' den*.

The constant interruptions of the narrative keep the audience up to date with the 'action' – it is sung in Latin, of course – and provide comment – often with tongue in cheek – and speculate as to how the play might have been performed nine centuries ago.

The performance is part of the 'Music in Romsey' programme for the year. Tickets available from [www.ticketsource.co.uk/musicinromsey](http://www.ticketsource.co.uk/musicinromsey) or the Romsey Visitor Information Centre.

[www.voxhumanaandgregoriana.com](http://www.voxhumanaandgregoriana.com)



Annual Bridge Tea  
Thursday 10th October 2024  
2pm - 5pm



The Manor House  
Preshaw, Near Upham.

Come and join us for a friendly competition and a gorgeous homemade tea. To book a table: £80 per table or to make a donation, please by emailing

[johanna.tyler@btinternet.com](mailto:johanna.tyler@btinternet.com)

## 10 Questions

If you have attended the Chilcomb events in recent years you can't have missed seeing the amazing photographs by Felix Walker-Nix. He was 11 when he started taking photos and he's only 15 now! He started selling his photos from when he was 12, selling them from a stall outside his house and now sells at many village fetes and events.



So as a valued member of our community, I asked him the following questions:

### What's your favourite thing about the season of Autumn?

It has to be the beautiful array of autumnal colours and the change in the landscape. It can be a great season to watch wildlife prepare for the harder winter months too.



### How would your friends and family describe you?

My friends would describe me as friendly, charismatic and kindhearted.

### How do you describe Highcliffe & Chilcomb to people who don't know this area?

Living in Chilcomb for three years, I would highlight the wonderful community spirit and friendliness of all the residents. As well as the beautiful countryside!

### What is it that you love about your photography?

I love photography as an art form to explore the natural world. I particularly love using my photography to show the incredible wildlife we have on our doorstep that is often overlooked in Hampshire.

### What do you find most challenging in your photography?

The weather! I am writing this tucked away inside my house keeping warm in my fleece as it rains outside. Cameras and water don't mix...

### How do your personal qualities and beliefs help you?

For wildlife photography patience is key. It is a quality I am constantly developing as wildlife is so unpredictable and can throw a range of challenges along the way.

### What changes have you made at home to help the environment/climate change?

My dad bought an electric car five years ago, and we recycle as much as we can.

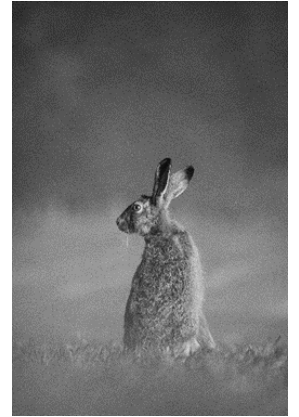
### What's something that no one would guess about you?



I have won two national wildlife photography competitions!

*These are the two that won his age category of British Wildlife Photographer of the year in 2023 and 2024.*

*You also might recognize him from being on BBC Country File.*



### What is your favorite book and why do you recommend people read it?

I would recommend the book 'wilding' by Isabella Tree, it's the story of the Knepp estate in Sussex as they change their farm from industrial arable farm to land rewilded for nature, it is a great read and a very thought-provoking idea.

### If you could give advice to someone starting off in photography, what would it be?

To have fun and experiment! It is an art form and can be interpreted in different ways, and in so many styles. I also think that having expensive kit isn't key, the way to improve at photography is to practice and explore a range of techniques.

In the future I would love to continue my photography, and ideally do it as a job. Or always keep it as my passion at least.

If you would like to see more of Felix's photos why not buy the 2025 Chilcomb Calendar (see advert later in this publication) or follow him on Instagram.



@photos.by.felix

RICHARD  
**STEEL**

& PARTNERS

THE FAMILY OWNED  
FUNERAL DIRECTORS

Serving Hampshire since 1860

Available 24 hours

Winchester (01962) 862333

Alresford (01962) 798789

[www.steelsfunerals.co.uk](http://www.steelsfunerals.co.uk)

Established friendly and professional  
Heating Services company supporting all your  
oil, gas and LPG needs.



- ◆ Highly efficient heating solutions designed, installed & maintained.
- ◆ Bespoke swimming pool heating solutions, with smart controls.
- ◆ Underfloor heating design, installation & overhaul.
- ◆ We also offer emergency breakdown, repairs, servicing & Certification.

t: 01962 600050 | e: [sales@ahs-heating.co.uk](mailto:sales@ahs-heating.co.uk)



[www.ahs-heating.co.uk](http://www.ahs-heating.co.uk)



- Fencing • Gates
- Decking • Sleepers
- Pergolas • Trellis

Call Andrew or Ashley on 01962 733990  
Installation service available



Prospect Road, Alresford,  
Hampshire SO24 9QF  
[www.prospectfencing.co.uk](http://www.prospectfencing.co.uk)



**CHIMNEY SWEEP**

- Professional & comprehensive service
- Stringent dust control methods observed
- No mess guarantee
- Bird guards & weather cowls fitted
- Wood stoves & multi-fuel stoves serviced
- Flue inspection & airflow testing
- Calls taken seven days a week

☎ 01962 734029  
☎ 07721 458067



**Need an electrician?**

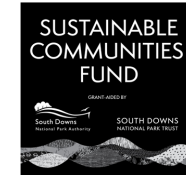
Lighting • Fuseboards • Rewiring  
EV Chargers • EICR Reports



[www.gaigas.co.uk](http://www.gaigas.co.uk)  
CALL 02380 363838



The countryside charity  
Hampshire



### Bar End Meadows Update

Magnificent Meadow Volunteers Attend Austrian Scythe Training Day at Winchester Stadium

On Sunday 11th August, ten dedicated volunteers from CPRE Hampshire's Magnificent Meadow project participated in an Austrian Scythe Training Day at Winchester Stadium. The training was led by Rachel Remnant, a Highcliffe-based ecologist specialising in meadow management.

The comprehensive training session covered a range of essential topics, so that the volunteers could use the scythe safely, both for themselves and to look after the scythe.

Of the ten volunteers, five were completely new to the experience. They were drawn to the project for various reasons, from a love of outdoor activities to an appreciation for the beauty of local meadows and a desire to learn more about them.

Will, a software engineer, purchased a scythe four years ago and has been cutting part of his garden by hand to encourage wildlife. His neighbours always stop and talk to him about what he's doing. Until now, he hasn't had any training. He tells us what it was like to attend the Austrian Scythe Training Day;

'It is great to get tips from Rachel and learn more about the maintenance of my scythe, which is a thing of beauty!'

In the afternoon, four more volunteers with scything experience joined the session and were put to work on a wildflower section within the grounds at Winchester Stadium. Working together, the volunteer team soon turned a rather daunting task into an easy one with synchronised movements to aid progress. Nikki, a recently retired social worker, valued the experience of working in a team. She said "It surprised me how effective we were when working together on a section. It made such a difference working alongside people to spur you on."

## Make Hay While the Sun Shines

The Magnificent Meadow project has seen a surge in interest, with over 20 people signing up. Currently, 10 volunteers are trained and ready to assist. Given the weather-dependent nature of hay making, volunteers will be called upon over the next few weeks to help make hay by hand at Cowslip Field, beside St Catherine's Park and Ride. The immediate challenge is to assemble the box baler to bale the hay and transport it from the meadow to the allotments.

You can also donate to support effective meadow management in Hampshire and help improve biodiversity whilst combating the climate crisis.

Donate here: <https://www.spacehive.com/barendmeadows>

If you would like to register as a volunteer, or buy hay for your animals, please get in touch: [rachel@landloreconsulting.com](mailto:rachel@landloreconsulting.com) 07745 977403



## HELPING YOU REDUCE YOUR ENERGY BILLS

Highcliffe Climate Action are making it easier for Highcliffe residents to find out how to reduce their home energy bills and make their homes more comfortable - as well as reduce their carbon impact.

They will be lending out (free of charge) their thermal imager again, when the weather gets cooler in the autumn. The imager gives a visual image of exactly where a home is losing heat - the group can then advise on how you could add draughtproofing and insulation to stop that happening.

They are also organising another Green Open Homes event in November - a chance to visit homes in Highcliffe that have been fitted with energy efficiency measures, such as insulation, solar panels and heat pumps. It's a great opportunity to talk to someone local who has made their home warmer and cheaper to run, and find out how they did it.



## REMEMBRANCE EXHIBITION



ALL SAINTS CHURCH  
Petersfield Road  
Winchester, SO23 0JD



Saturday 9<sup>th</sup> November 10am to 4pm 2024  
Sunday 10<sup>th</sup> November 12noon to 4pm 2024  
finishing with Compline at 4pm Sunday -  
a service the soldiers would have known well

Displays and artefacts from WW1 & WW2

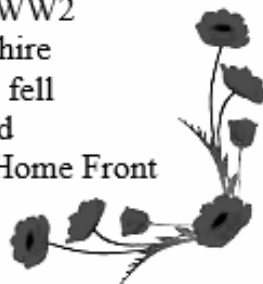
Search the war memorials of Hampshire

Come and remember both those who fell  
and those who served and returned

and all the people who did their part on the Home Front



For further information contact  
Steve: 01962 866490



## COMMUNITY FORUM FOR ACTION

### Annual General Meeting AGM

Monday, 7th October 2024

at 7.00 pm

University of Winchester Sports Stadium, off Milland Road.

**All Welcome!**

A review of the work carried out during the past year.

Election of officers and committee members.



find out more at



[www.highcliffeforum.wordpress.com](http://www.highcliffeforum.wordpress.com)

including section on Climate Action

@Highcliffeforum Highcliffe Community Forum for Action - Winchester







## New Sports Pavilion

Over the past year Winchester City Council have been building a large sports pavilion on the King George V Playing Fields site. It is now complete and was officially opened

at the beginning of August. The facilities will be used primarily by the girl's and women's Winchester City Fliers FC, along with the Compton and Chandler's Ford Cricket Club. Whilst they have priority over its use it is available for hire by the wider community, through the Council's website.

It has suites of changing rooms, toilets and stores at ground level. There is a large open plan space on the first floor, containing a café style seating area with adjacent toilets and a kitchen and service counter. This space opens onto a viewing terrace.

In its design and construction it was built using the BREEAM (Building Research Establishment Environmental Assessment Method) which ensures that it has been built to the highest standards of sustainability. A BREEAM rating takes account of energy, health, wellbeing, transport, water use, ecology and biodiversity, materials, waste and pollution.

The Pavilion has a 'Green Roof' which provides greater thermal value, water 'run-off' and Carbon Dioxide reduction, as well as increased habitat diversity. Solar Panels and Air Source Heat Pumps help to generate sustainable energy. There are also EV charging stations provided in the small car park which is limited due to the Fields in Trust Charitable status of the KGV Playing Fields and its restrictions on development on such areas.



## Friends of St. Giles Hill Park

The Friends charity is working with the Council to improve the park by tackling some of the maintenance backlog.

Council works include stabilisation of the steep west face of the hill - a priority to maintain the safety of the paths. Further tree works are also needed to remove the remaining ash trees suffering from Ash Die Back - these become dangerous as they are likely to shed limbs without warning. Community Service teams are helping by painting the railings.

A joint walk around the park in July resulted in an agreement for the Friends to plant more native flower species such as cowslips, primroses, daffodils, bluebells and wild garlic and the Council agreed to keep the paths clear by strimming the overgrowth back at the sides.

Do join one of our working parties or other events. Details can be found on our web site: [www.friendsofstgileshillpark.org/](http://www.friendsofstgileshillpark.org/) It's free to sign-up as a Friend and you will receive a monthly newsletter by email which will keep you up to date on what is happening.

A very successful "Gathering of Friends" was held in May at St. Swithun's Junior School. We announced the recruitment of Nathan Eve as our Youth Co-ordinator to work with local community youth groups such the Scouts, primary schools and colleges encouraging and enabling them to engage young people in the park during the course of their activities.

We also made an appeal for annual donations, large or small, to help us raise the funds for our running costs, more tools and wild flower planting. Thank you to those who have generously contributed – you have made it possible for us to plan the planting programme this winter. A donate button on the web site makes it quick and easy if you would like to help.

Mike Biden

Secretary, Friends of St. Giles Hill Park

## Aluminium recycling bin in Gordon Avenue

Highcliffe now has an aluminium recycling bin, thanks to the Highcliffe Forum for Community Action - and all the profits go to the Hampshire & Isle of Wight Air Ambulance.

Nearly all drink cans are aluminium, plus foil trays and kitchen foil, empty deodorant cans, tomato paste tubes and cat food containers - but please make sure they are all as clean as possible.



The recycling bin is on the front drive of 52 Gordon Avenue - so you can use it anytime.

If you know of any other collections please let us know and we can list in the next edition.



HAMPSHIRE AND  
ISLE OF WIGHT  
AIR AMBULANCE

Items collected	Charity	Collection Point	Contact
Furniture	Emmaus	Bar End	01962 868 300 <a href="mailto:info@emmaushampshire.org.uk">info@emmaushampshire.org.uk</a>
Milk tops	Kicks Count	Earthian,	
Bread Bags		Parchment Street	
Food: (in date) Cleaning products and Toiletries	Winchester Basics Bank	Milland Rd.	01962 855774 <a href="mailto:mail@winchesterbasicsbank.co.uk">mail@winchesterbasicsbank.co.uk</a>
Clothes and Shoes	Winchester Hospice	Clothes bin behind Hospice	01962 825344

## REQUEST FOR A HOST

Dear Neighbours,



We live in Highcliffe and have had a Ukrainian doctor and her little son staying with us for nearly two years. Sadly, they have not been able to see the little boy's father all this time because men are not allowed out of the country. But now that he is 65 he is able to leave and would like to come to Winchester to see his family. I am looking for someone to invite him so that he can get a visa. It would be terrific if someone could do this and offer a room. It is not necessary to provide food and the host is paid £500 a month as a thank you. Kostya does not smoke. We can help with doing the invitation if necessary. If you can help please email me at [jenstables@gmail.com](mailto:jenstables@gmail.com)

Jenny



## 2025 Calendar

Features wildlife photos taken in and around Chilcomb

High quality colour page per month

Space for notes on each day

Proceeds in aid of Chilcomb Church

Available now - £10 including strong envelope

To purchase email:

[office@eastwinchester.org](mailto:office@eastwinchester.org)

and mention Chilcomb Calendar in the subject line



## Brendoncare in Winchester

Kindness, dignity and respect are at the heart of everything we do

**Brendoncare St Giles View**  
Nursing Care and Dementia Care

**Brendoncare Otterbourne Hill**  
Nursing Care, Dementia Care and Extra Care Housing

**Brendoncare Meadway**  
Residential Care

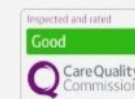
New care home in a beautiful elevated part of Winchester

Spacious care home with extra care apartments and community hub

Small and friendly home in tranquil outskirts of Winchester

Contact our friendly team today

Call **01962 673600**  
email [homes@brendoncare.org.uk](mailto:homes@brendoncare.org.uk)  
or visit [brendoncare.org.uk/carehomes](http://brendoncare.org.uk/carehomes)  
Registered charity no: 326508



40 YEARS OF CARING  
1984-2024



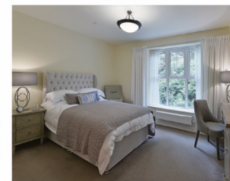
WINCHESTER HEIGHTS CARE HOME

# Live Safe & Well

Winchester Heights offers a safe and supportive environment where residents can flourish, make new friends, remain part of their local community and live a life of possibility.

Residential, nursing, dementia and respite care • Couples and companions welcome  
Spacious, beautifully decorated apartments • Highly trained staff teams  
Stimulating schedule of daily activities and entertainment

☎ 01962 438219 [averyhealthcare.co.uk](http://averyhealthcare.co.uk)



AveryCollection

CHA WINNER 2023  
CARE HOME AWARDS

Stockbridge Road | Winchester | Hampshire | SO22 5JH

**Parish and Community News: Published seasonally every 3 months.**

**The deadline for the Winter edition is 9am on 15<sup>th</sup> November 2024.**

**Please send copy in word format to [magazine@eastwinchester.org](mailto:magazine@eastwinchester.org)**

